

Sample Information

Name	84761_SC-16-16.d
Data File	D:\MassHunter\Data\MS Service\2025\April\84761_SC-16-16.d
Instrument	QTOF
Method (Acq)	Standard ESI +Ve.m
Inj. Vol. (ul)	1
Position	P1-E2

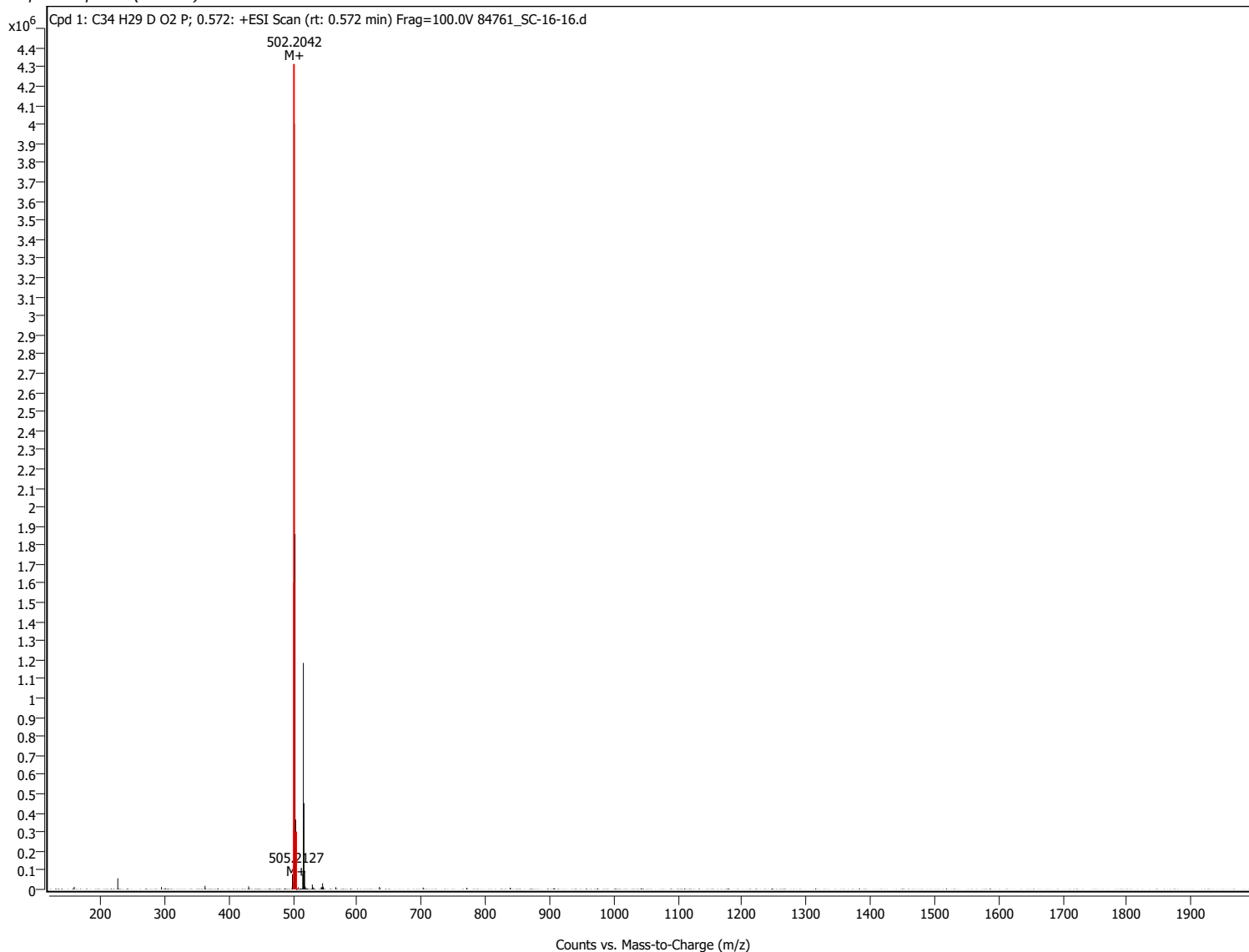
Sample Chromatograms

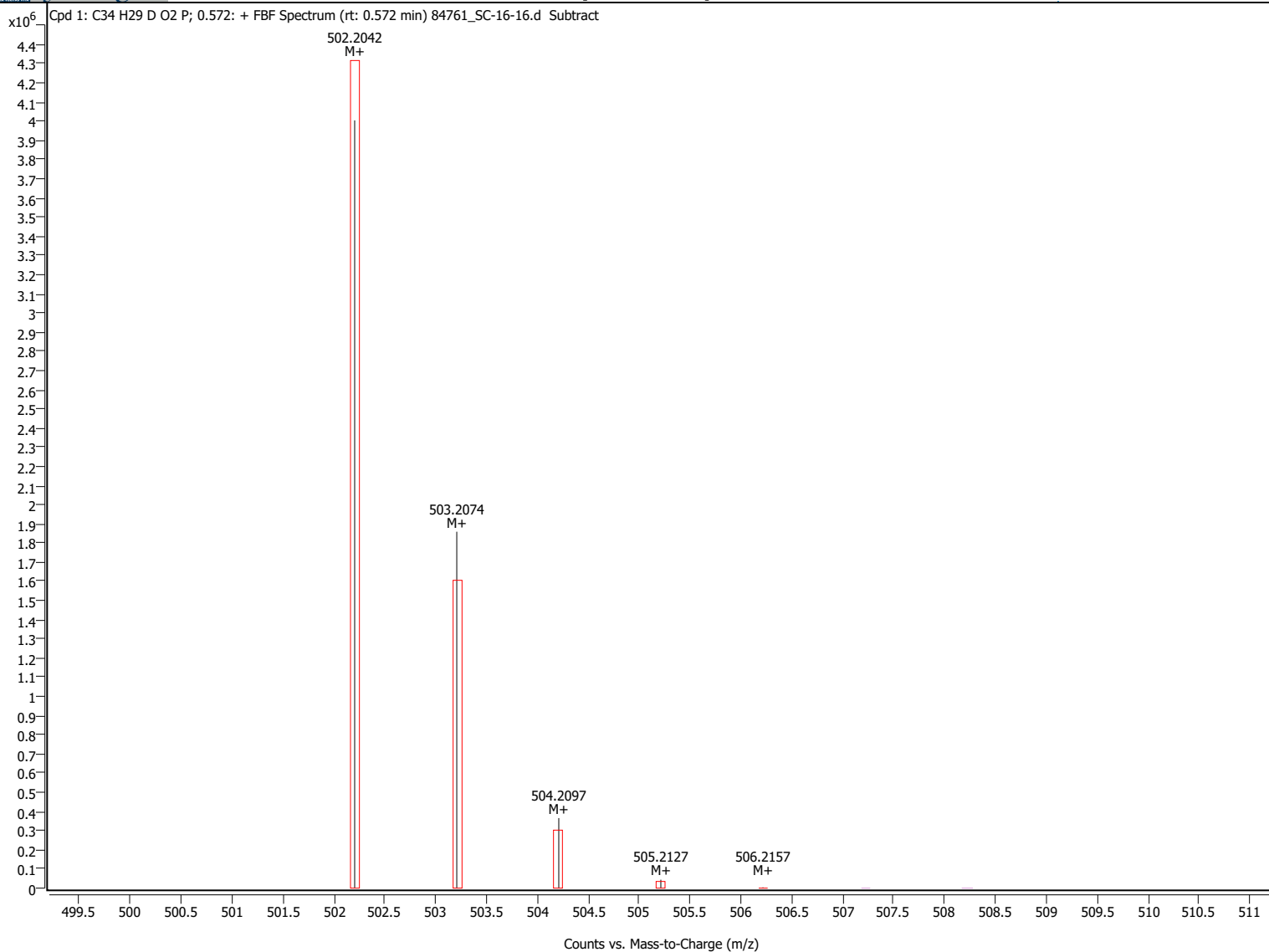
Compound Details

Cpd. 1: C34 H29 D O2 P

Name	Formula	Mass (Tgt)	Mass	Diff (Tgt, ppm)	Score (Tgt)
	C34 H29 D O2 P	502.204618	502.204597	-0.04	92.12

Compound Spectra (overlaid)





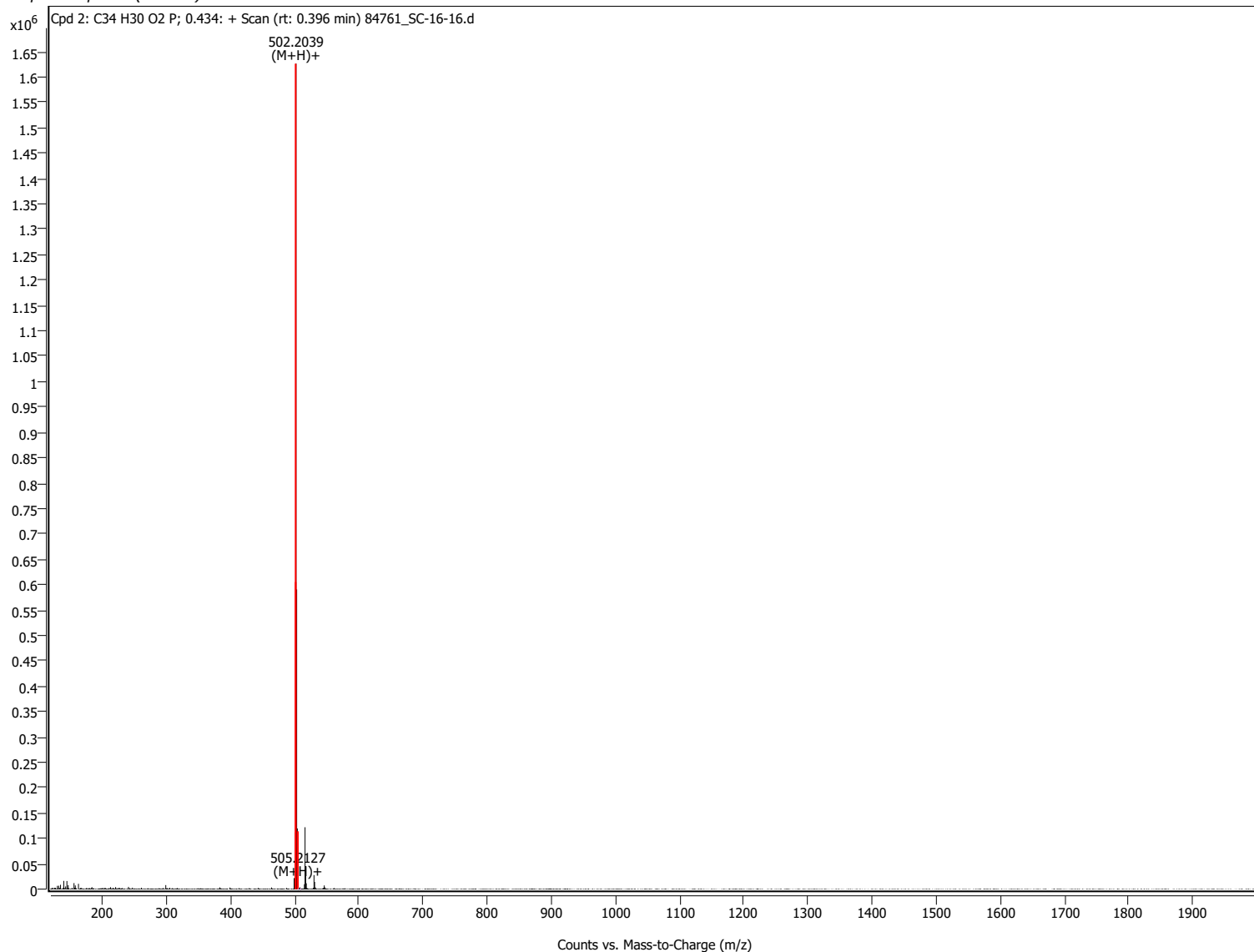
Spectrum Peaks

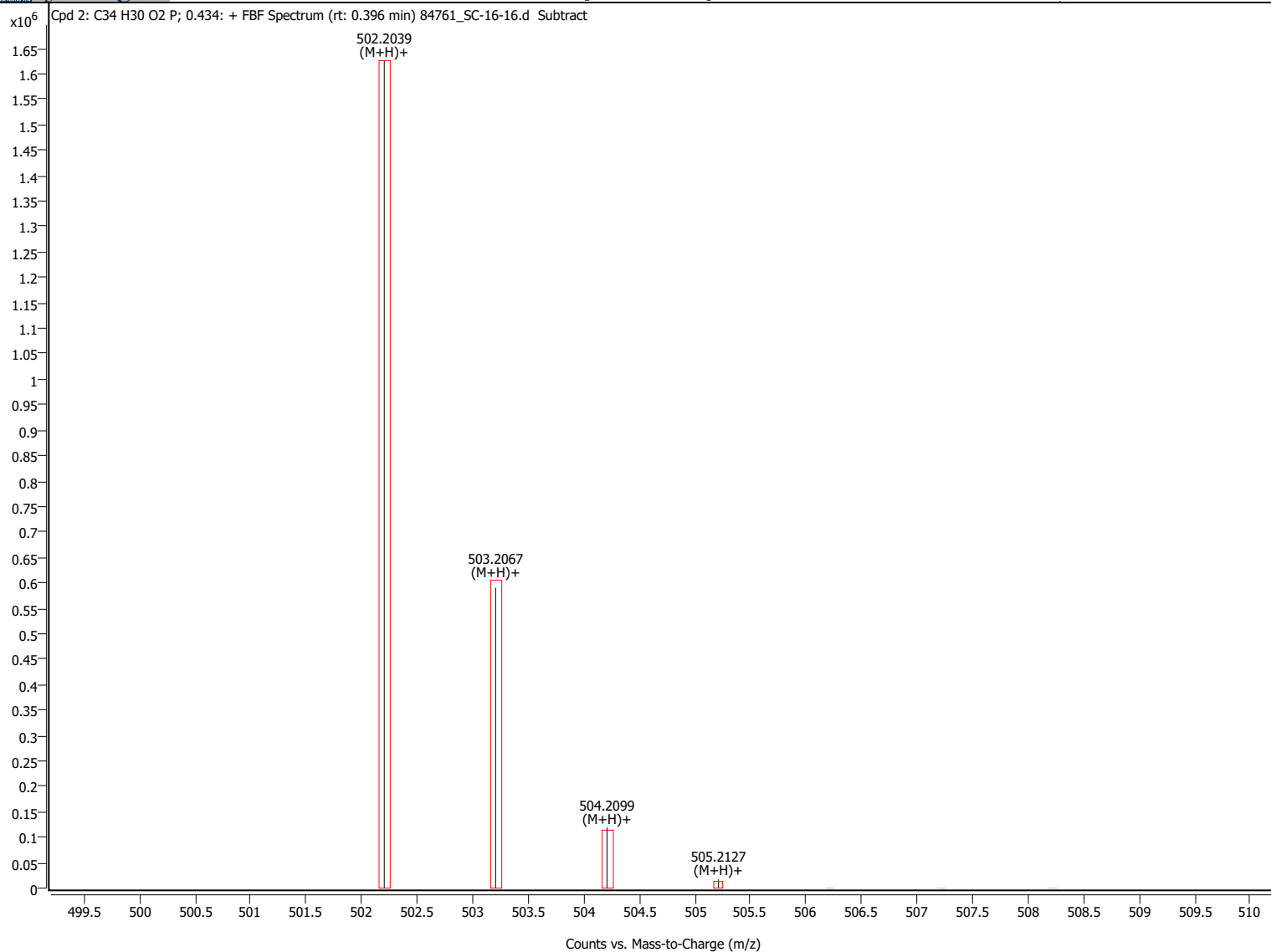
Ion Species	m/z	m/z (Calc)	Diff (ppm)	Abund	Height %	Height % (Calc)	Z
M+	502.204159	502.204070	0.18	4004545	100.00	100.00	1
M+	503.207415	503.207453	-0.07	1859122	46.43	37.18	1
M+	504.209683	504.210692	-2.00	365418	9.13	7.13	1
M+	505.212655	505.213812	-2.29	43906	1.10	0.94	1
M+	506.215733	506.216852	-2.21	4243	0.11	0.09	1

Cpd. 2: C34 H30 O2 P

Name	Formula	Mass (Tgt)	Mass	Diff (Tgt, ppm)	Score (Tgt)
	C34 H30 O2 P	501.198342	501.196461	-3.75	92.72

Compound Spectra (overlaid)





Spectrum Peaks

Ion Species	m/z	m/z (Calc)	Diff (ppm)	Abund	Height %	Height % (Calc)	Z
(M+H)+	502.203926	502.205618	-3.37	1626634	100.00	100.00	1
(M+H)+	503.206724	503.209003	-4.53	590478	36.30	37.21	1
(M+H)+	504.209869	504.212244	-4.71	119580	7.35	7.13	1
(M+H)+	505.212719	505.215366	-5.24	17385	1.07	0.94	1

